

## PSU-XR

When to update?

The PSU-XR features user-upgradable firmware via a port on the back panel.

Owners can check the Cyrus website for notification of updates or register their products to receive notification when updates are released.

## COMPUTERS AND OPERATING SYSTEMS

Cyrus firmware upgrades are possible using a PC computer. No special app is required, just basic file management skills to download, copy, rename and delete files.

The screenshots in the example are of a computer using Windows File Explorer under Windows 10 operating system. Other operating systems, computers and file management apps will appear differently although the steps in the upgrade procedure will be the same.

## TOOLS REQUIRED

The PSU-XR will not require dismantling.

A mini USB cable (supplied) and the upgrade firmware will also be required.

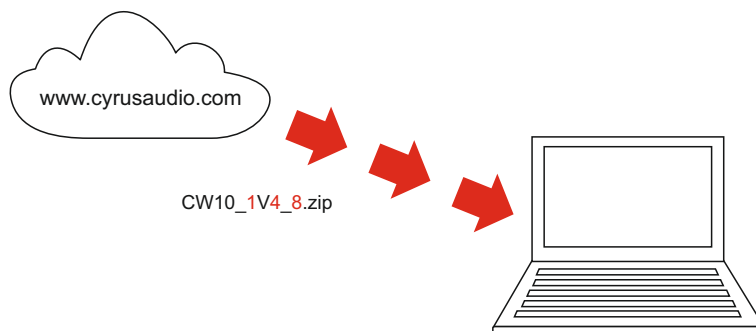
NOTE: Not all mini USB cables are data cables, some are charging cables. A charging cable is not suitable for firmware upgrades. Always use the cable supplied with the amplifier where possible.

## DOWNLOAD

Download the firmware you require from the Cyrus website at [www.cyrusaudio.com](http://www.cyrusaudio.com).

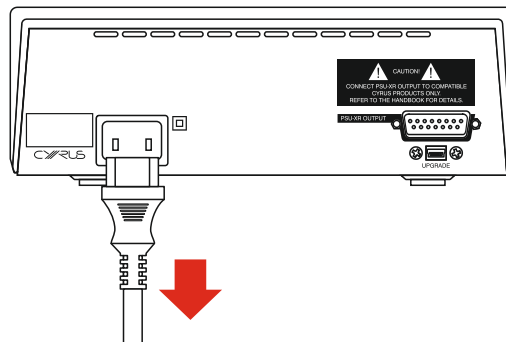
The firmware file name will be contained in a zip file in the format 'CW10\_MCU\_1v4\_8.zip' where the red numbers in the example will change to indicate the firmware version. This 1v4\_8 firmware version will be used through the rest of this example instruction sequence.

File name formats may change from time to time, but PSU-XR amplifier firmware will always be prefixed 'CW10' and will clearly include the version number.



## DISCONNECT

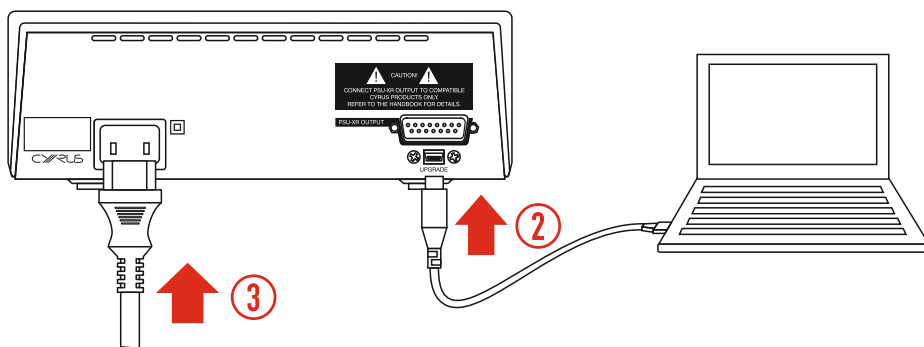
Disconnect mains power from the PSU-XR.



## CONNECT

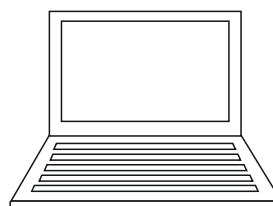
1. Connect the update cable to the computer.
2. Connect the mini-USB cable to the UPGRADE port on the back of the amplifier.
3. Connect mains power.

*The PSU-XR is now ready to update.*



## UPGRADE

Follow the instructions on the next page to update the firmware.



## UNZIP

The firmware update file is packaged with these instructions in the 'zip' file download.

- Open the 'Firmware' folder within the zip file.

*The firmware file name will be firmware.bin.*

- Extract the firmware file to the 'Downloads' folder.

Zip file

Update instructions

Change log

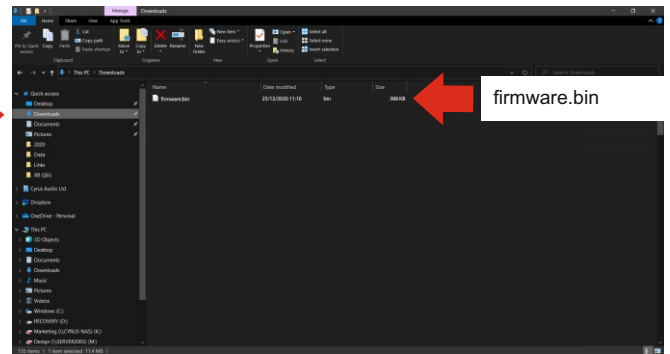
Firmware folder

firmware.bin

## COPY

- Select the 'firmware.bin' file in the Downloads folder and copy it (Ctrl+C).

DOWNLOADS



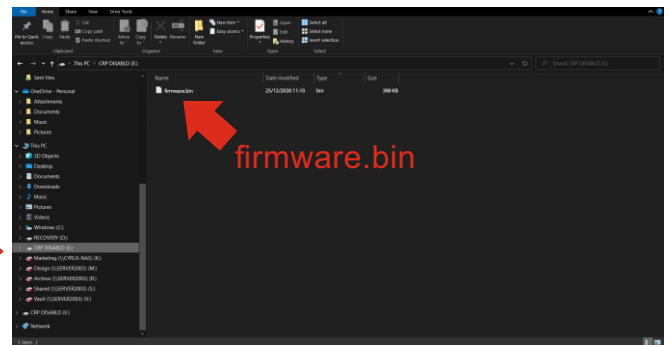
## DELETE ORIGINAL

In a File Explorer window the PSU-XR should be visible as a drive titled 'CRP DISABLD'. On that drive should be a single file (the current firmware), titled 'firmware.bin'.



- Locate and select the CRP DISABLD folder.
- Press 'delete' to delete the firmware.bin file.

CRP DISABLD



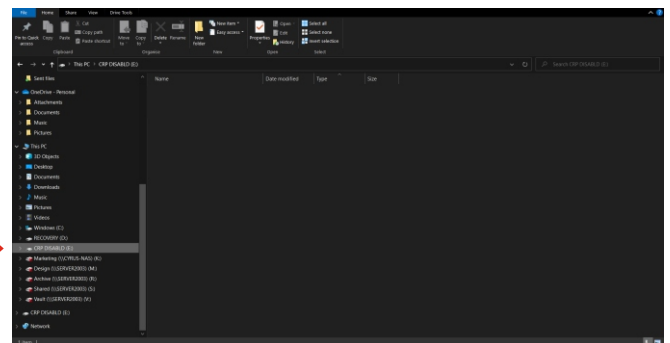
## PASTE UPDATE

- Select the CRP DISABLD folder.
- Paste the new firmware into this folder (Ctrl+V).



*You should see a progress bar as the file is copied.*

CRP DISABLD



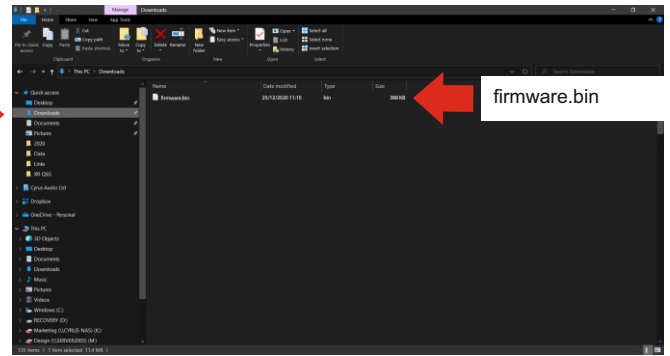
## DELETE DOWNLOAD

To avoid confusion in any future updates, it's good practice to delete the download before proceeding.

- Return to the downloads folder.
- Highlight the 'firmware.bin' file.
- Press DELETE.

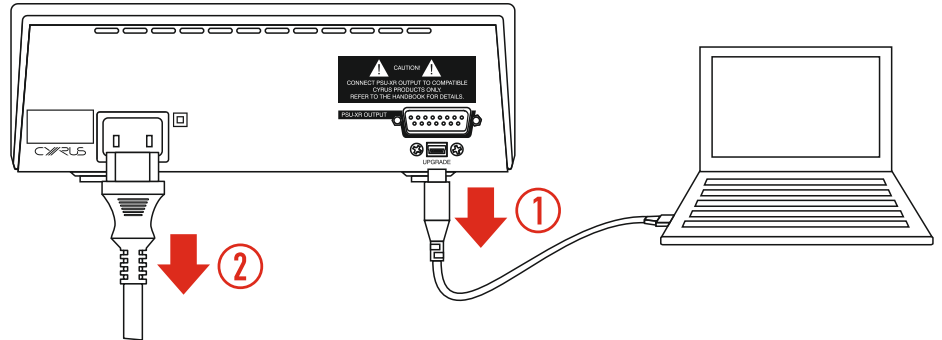
*The firmware download will be deleted.*

DOWNLOADS →



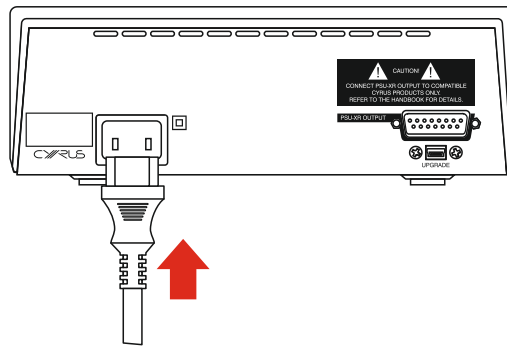
## DISCONNECT

1. Disconnect the update cable.
2. Disconnect mains power.



## CONNECT POWER

Re-connect mains power.



## CHECK VERSION

- Power up the PSU-XR.
- The firmware version will be displayed on the Standby/Status indicator when mains power is connected.

*For example -*

*1 x red flash followed by 2 x green flashes followed by continuous red (standby) indicates V1.2.*

*2 x red flashes followed by continuous red (standby) indicates V2.0.*

- Confirm that the updated firmware version is displayed as above.

